

Table 1

NUMBER OF CONTACTS	A	B	C	D
15	16.33	24.99	30.85	2.29
26	24.66	33.32	39.14	2.29
44	38.38	47.04	53.04	2.29
62	54.84	63.50	69.32	2.41

**SPECIFICATIONS:
ELECTRICAL SPECIFICATION**

Contact Current Rating: 3 Amperes
 Dielectric Withstanding Voltage: AC 1000/60ses.r.m.s.
 Insulation Resistance: 5000 Megohm Min. at DC 500V
 Contact Resistance: 25 milliohm Max.
 Operating Temperature: -55°c_+105°c

MATERIALS:

Contacts: Brass or Phosphor bronze
 Contacts: See number description
 Insulator: PBT+G.F U194V-0
 Shell: Steel or Stainless steel

PART NO:

ZHR F15 F E1 B G N 3 0
 2 3 4 5 6 7 8 9 10

- D-SUB Female Dual Row IDC Type (Stamped PIN)
- board lock material:
F: Iron
N: Brass
- Contact No.:
15=15PIN 26=26PIN
44=44PIN 62=62PIN
- Contact Type:
F=Female type, Brass (stamped PIN)
S=Female type, Brass (stamped PIN)
- Contact plating:
See table 2
- Assembly:
A=Rork lock type
B=Riveting type
F=Front hole rivet Round nut type, 6.0mm
- Accessories:
0: No accessories
A: With iron hexagon screw, 4.8*11.8mm
B: With brass hexagon screw, 4.8*11.8mm
E: Lock brass hexagon screw, 5.8*12.8mm
G: Lock iron hexagon screw, 4.8*11.8mm
J: Lock iron hexagon screw, 5.8*12.8mm
K: Lock brass hexagon screw, 4.8*11.8mm
- Shell material and plating:
N=SPCC, Plating nickel
D=Stainless steel, Passivation
C=Stainless steel, Plating nickel
T=SPCC, Plating Tin
- Color:
1=White
2=Blue
3=Black
- Remark:


Table 2

Gold Plated		Selective Gold Type			
CODE	Contact Area	Other Area	CODE	Contact Area	Other Area
C1	Gold Flash	Gold Flash	E1	Gold Flash	Tin plated
C2	Gold 3u"	Gold Flash	E2	Gold 3u"	Tin plated
C3	Gold 10u"	Gold Flash	E3	Gold 10u"	Tin plated
C4	Gold 15u"	Gold Flash	E4	Gold 15u"	Tin plated
C5	Gold 30u"	Gold Flash	E5	Gold 30u"	Tin plated

unless otherwise specified tolerance:

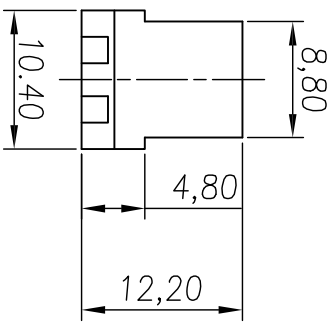
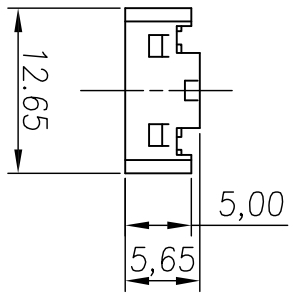
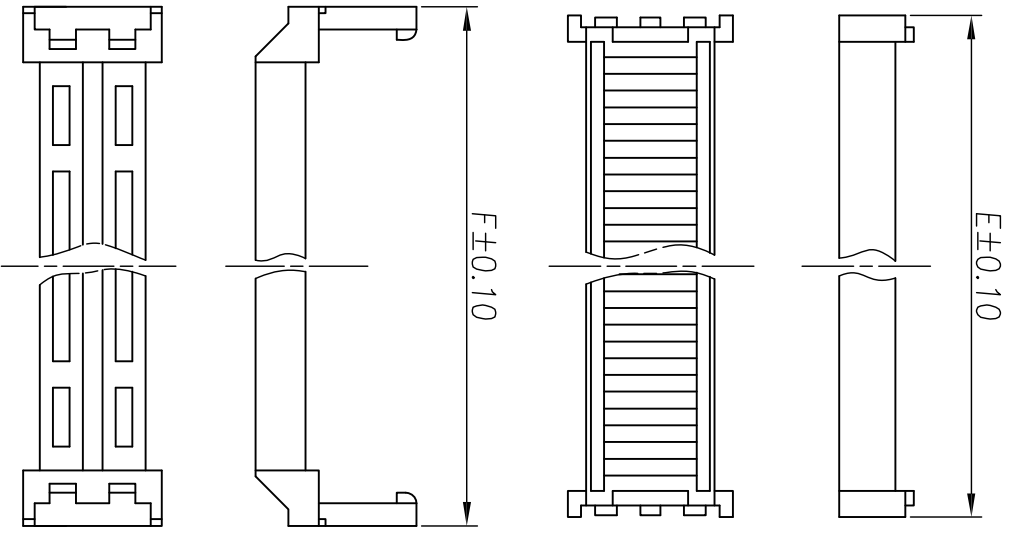
MARK	DESCRIPTION	DATE	REVISED	APPROVED

DSND	HUANGLM	DATE	2011-12-01	SCALE		NAME:	D-SUB Female Dual Row IDC Type (Stamped PIN)
CHKD		VIEW:		UNIT:	mm	Part No.:	Z1D 0xx F(S) x x x x x x x
APPD						Customer Part No. (DWG NO.)	


Dongguan Fishu Electronic Technology Co., Ltd
 Tel: 0755-81765247/41 Fax: 0769-81765203

1
2
3
4
5
6
7
8
9
10
11
12
13
14
15

ROHS



Pin	DB9Pin	DB15Pin	DB25Pin	DB37Pin
E	15.05	23.65	37.05	53.70
F	18.80	26.90	40.50	56.65

unless otherwise specified tolerance:

- .X ± .38,
- .XX ± .25,
- .XXX ± .15,

ANG ± 2°

DSND	HUANGJM	DATE	2011-12-01	SCALE:		NAME:	ZDD 0xx FS) x x x x x x x x
CHKD		VIEW:		UNIT:	mm	Part No:	D-SUB Female Dual Row IDC Type(Stamped PIN)
APPD							Customer Part NO.(DWG NO.)

Dongguan Fishu Electronic Technology Co., Ltd
 Tel:0755-81765247/41 Fax:0769-81765203

MARK	DESCRIPTION	REVISIONS	DATE	REVISED	APPROVED