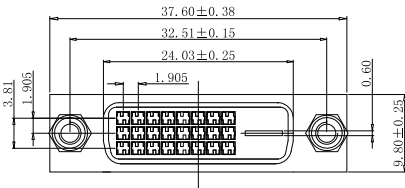
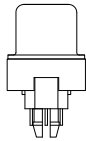
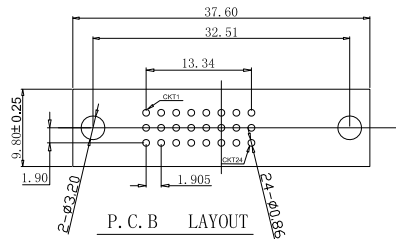
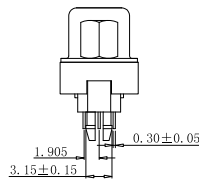
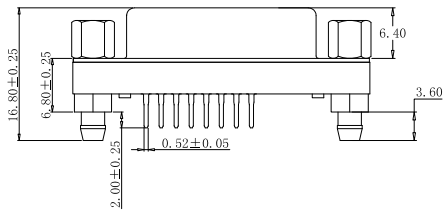
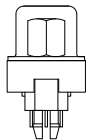


RoHS

Front rivet type



Front rivet lock type



SPECIFICATIONS:

ELECTRICAL SPECIFICATION

- Contact Current Rating: 1.5 Amperes
- Dielectric Withstanding Voltage: AC 500/60ses.r.m.s.
- Insulation Resistance: 1000 Megohm Min. at DC 500V
- Contact Resistance: 30 milliohm Max.
- Operating Tempetature: -55°c__+85°c

MATERIALS:

- Contacts: Brass or Phosphor bronze
- Insulator: PBT+G.F UL94V-0
- Shell: Steel

PART NO:

ZVP B24 F E 1 B H N 1 0
1 2 3 4 5 6 7 8 9 10

- | | |
|--|---|
| 1, DVI Female straight Type(Stamped PIN) | 7, Accessories : |
| 2, Dimension:
B:6.8mm | 0 : No accessories
H : Lock iron hexagon screw , 4.8*9.6mm |
| 3, Contact No. :
18=(18+0)PIN 24=(24+0)PIN | 8, Shell material and Plating:
N=SPCC,Plating nickel |
| 4, Contact Type:
F=Female type (stamped PIN) | 9, Color :
1=White |
| 5, Contact plating :
See table 3 | 10, Remark: |
| 6, Assembly :
B: Front rivet type | |

Table 3

Selective Gold Type		
CODE	Contact Area	Other Area
E1	Gold Flash	Tin plated
E2	Gold 3u"	Tin plated
E3	Gold 10u"	Tin plated
E4	Gold 15u"	Tin plated
E5	Gold 30u"	Tin plated

unless otherwise specified tolerance:

- . X ± . 38, ANG ± 2°
- . XX ± . 25,
- . XXX ± . 15,

DSND	HUANGJM	DATE	2011-12-01	SCALE:	NAME:
CHKD				VIEW:	DVI 24+0, Female straight ,10.0mm Tyoe(Stamped PIN)
APVD				UNIT: mm	Part No: ZVP-BXXFXXBXXXX
				Customer Part NO:(DWG NO.)	



Dongguan Fushu Electronic Technology Co.,Ltd
Tel:0755-81765247/41 Fax:0769-81765203

MARK	DESCRIPTION	DATE	REVISED	APPROVED	REVISIONS