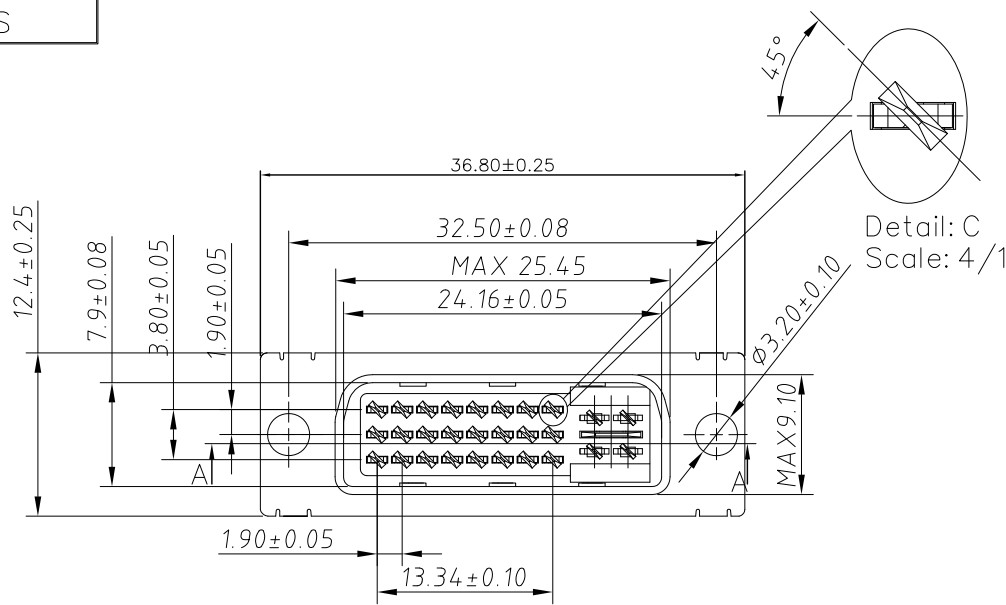


RoHS



Material:

1. Insulator: PBT(Black)+30%Glass Fiber (UL94V-0)
2. Contact: Brass C2680 and phosphor bronze C5191
3. Contact Plated: SEE "HOW TO ORDER"
4. Shell: SPCC-SD (salt test: 12H)
5. Shell Plated: front shell 60u" Cu MIN, 100u" Ni MIN OR 1u" Au MIN
back shell Cu60u"/Sn100u"-120u"

Electrical Specification

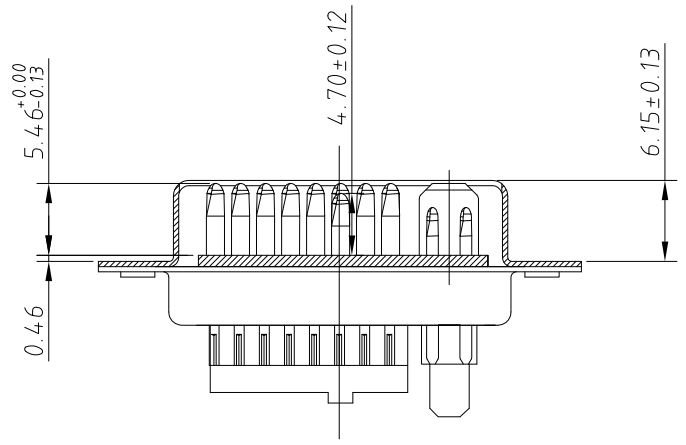
1. Contact Resistance: 20mΩ MAX
2. Insulation Resistance: 1000MΩ MIN
3. Dielectric Withstanding Voltage: 500V DC

Environmental

Operating Temperature: -20°C~85°C.

Mating and unmating forces:

Test condition: ANSI/EIA364-13 insert and extract at a speed of 25mm/minute.
Unmating forces: 1Kgf Min. 4Kgf Max.; Mating forces: 4.5Kgf Max.



SECTION : A-A

PART NO:

ZVB 029 ME 1 B 0 N 1 0
1 2 3 4 5 6 7 8 9 10

1, DVI 24+5 Male solder Type(Stamped PIN)	7, Accessories : 0 : No accessories
2, Board lock material: N/A	8, Shell material and Plating: A=SPCC,Front shell plating nickel and rear shell tin 1
3, Contact No. : 29=(24+5)PIN	9, Color : 1=Black
4, Contact Type: M=Male type (stamped PIN)	10, Remark:
5, Contact plating : See table 1	
6, Assembly : B: Front rivet type	

MARK	DESCRIPTION	DATE	REVISED	APPROVED
REVISIONS				

unless otherwise specified tolerance:

- . X ± .38,
- . XX ± .25,
- . XXX ± .15,

ANG ± 2°

DSND	HUANGJM	DATE	2011-12-01	SCALE:	
CHKD				VIEW:	
APVD				UNIT:	mm

Dongguan Fushu Electronic Technology Co.,Ltd
Tel:0755-81765247/41 Fax:0769-81765203

NAME:	DVI 24+5 Male solder Type(Stamped PIN)
Part No:	ZVB-0XXMXXBXXXX
Customer Part NO:(DWG NO.)	