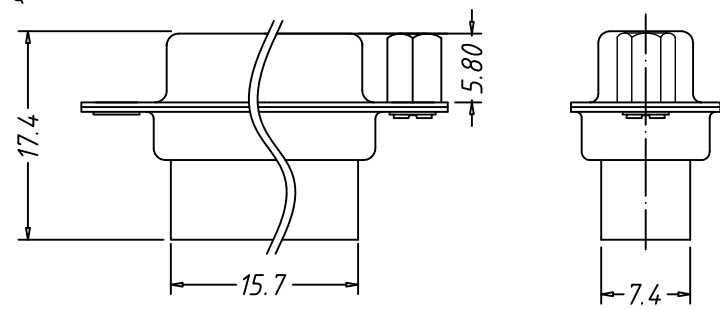
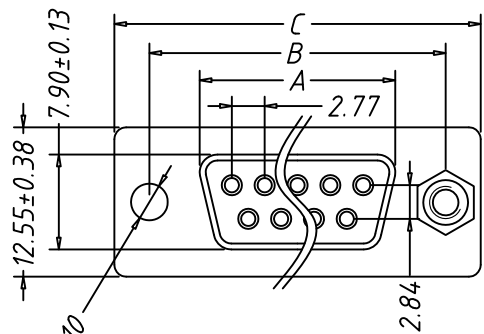
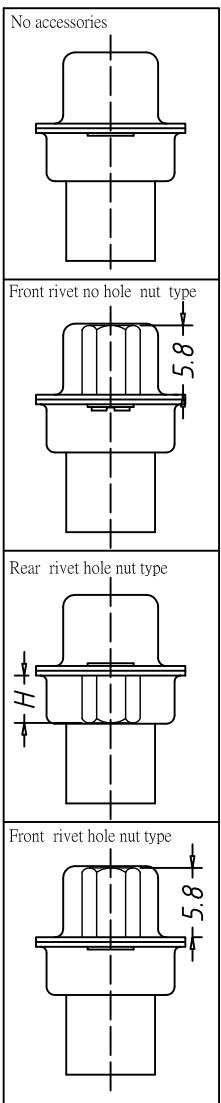


RoHS



**SPECIFICATIONS:**  
**ELECTRICAL SPECIFICATION**

Contact Current Rating: 5 Amperes  
 Dielectric Withstanding Voltage: AC 1000/60ses.r.m.s.  
 Insulation Resistance: 5000 Megohm Min. at DC 500V  
 Contact Resistance: 25 milliohm Max.  
 Operating Temperature: -55°c ~ +105°c

**MATERIALS:**

Insulator: PBT+G.F UL94V-0  
 Shell: Steel or Stainless steel

PART NO:

ZDC 009 F E 1 D Q N 3 0

- |  |  |
|--|--|
| 1, D-SUB Female Dual Row Crimp Type(Stamed PIN)  | 7, Accessories :   |
| 2, Board lock material:<br>N/A   | 0 : No accessories   |
| 3, Contact No. :<br>09=9PIN            15=15PIN<br>25=25PIN         37=37PIN   | E : Lock brass hexagon screw,5.8*12.8mm<br>G: Lock iron hexagon screw , 4.8*12.8<br>H : Lock iron hexagon screw , 4.8*9.6mm<br>J : Lock iron hexagon screw , 5.8*12.8mm<br>K : Lock brass hexagon screw,4.8*11.8mm |
| 4, Contact Type:<br>M=Female type  | 8, Shell material and Plating:<br>N=SPCC,Plating nickel<br>A=SPCC.Front shell plating nickel<br>and rear shell tin<br>D= Stainless steel,Passivation<br>C=Stainless steel, Plating nickel<br>T=SPCC,Plating Tin    |
| 5, Contact plating :<br>N/A  | 9, Color :   |
| 6, Assembly :  | 1=White<br>2=Blue<br>3=Black   |
| A=Rear rivet hole hexagon nut,5.8mm<br>B=No accessories<br>C=Front rivet no hole hexagon nut,5.8mm<br>D=Rear rivet hole hexagon nut,3.0mm<br>K=Rear rivet hole hexagon nut,4.0mm<br>L=Rear rivet hole hexagon nut,6.5mm<br>N=Rear rivet hole hexagon nut,6.3mm | 10, Remark:  |

Table 1

CODE	H
D	3.00
E	3.00
K	4.00
N	6.30
A	5.80

Table 2

NUMBER OF CONTACTS	A	B	C
	±0.25	±0.13	±0.38
9	16.33	24.99	30.85
15	24.66	33.32	39.14
25	38.38	47.04	53.04
37	54.84	63.50	69.32

unless otherwise specified tolerance:

. X ± . 38,  
. XX ± . 25,  
. XXX ± . 15,

ANG ± 2°

MARK	DESCRIPTION	DATE	REVISED	APPROVED
REVISIONS				

DSND	HUANGJM	DATE	2011-12-01	SCALE:	NAME:
CHKD				VIEW:	D-SUB Female Dual Row Crimp Type(Stamed PIN)
APVD				UNIT: mm	Part No: ZDC0XXFXXXXXX
Dongguan Fushu Electronic Technology Co.,Ltd Tel:0755-81765247/41 Fax:0769-81765203				Customer Part NO:(DWG NO.)	