

RoHS

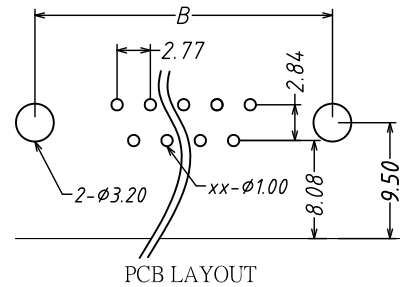
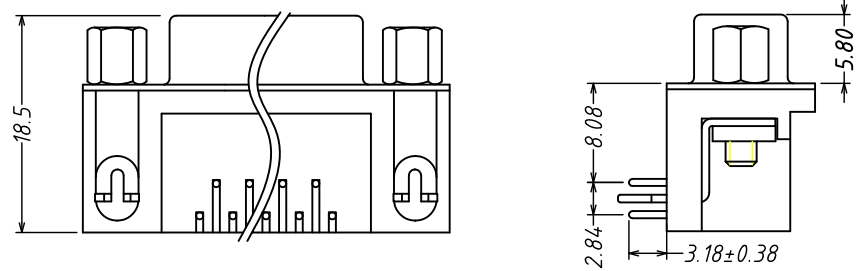
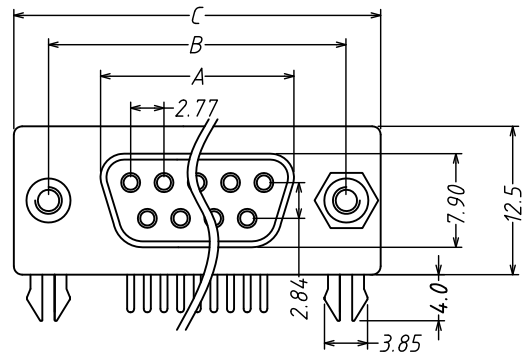
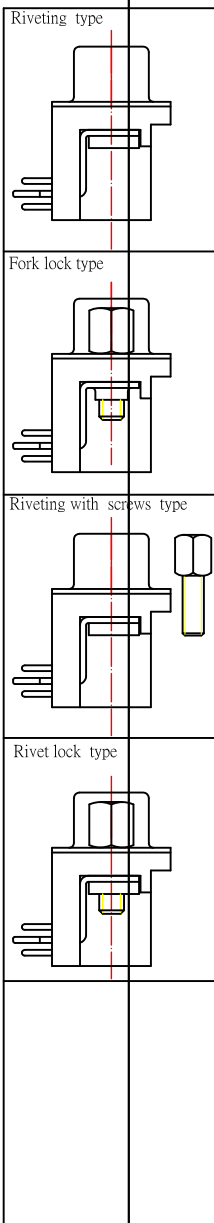


Table 1

NUMBER OF CONTACTS	A	B	C
	±0.25	±0.25	±0.38
09	16.33	24.99	30.85
15	24.66	33.32	39.14
25	38.38	47.04	53.04
37	54.84	63.50	69.32

SPECIFICATIONS:
ELECTRICAL SPECIFICATION

Contact Current Rating: 5 Amperes
 Dielectric Withstanding Voltage: AC 1000/60ses.r.m.s.
 Insulation Resistance: 5000 Megohm Min. at DC 500V
 Contact Resistance: 25 milliohm Max.
 Operating Tempetature: -55°c ~ +105°c

MATERIALS:

Contacts: Brass or Phosphor bronze
 Contacts: See number description
 Insulator: PBT+G.F UL94V-0
 Shell: Steel or Stainless steel

PART NO:

ZHR F15 F E 1 BGN 3 0
 1 2 3 4 5 6 7 8 9 10

1, D-SUB Female Three Row Right Angle Type(Stamed PIN)	7 · Accessories :
2, board lock material:	0 : No accessories
A: Iron	A: With iron hexagon screw, 4.8*11.8mm
H: Brass	B: With brass hexagon screw, 4.8*11.8mm
3, Contact No. :	E : Lock brass hexagon screw, 5.8*12.8mm
09=09PIN 15=15PIN	G: Lock iron hexagon screw, 4.8*11.8mm
25=25PIN 37=37PIN	J : Lock iron hexagon screw, 5.8*12.8mm
4, Contact Type:	K : Lock brass hexagon screw, 4.8*11.8mm
F=Female type, Brass (stamped PIN)	8 · Shell material and Plating:
5, Contact plating :	N=SPCC, Plating nickel
See table 2	D= Stainless steel, Passivation
6, Assembly :	C=Stainless steel, Plating nickel
A=Fork lock type	T=SPCC, Plating Tin
B=Riveting type	9 · Color :
	1=White
	2=Blue
	3=Black
	10 · Remark:

Table 2

Gold Plated			Selective Gold Type		
CODE	Contact Area	Other Area	CODE	Contact Area	Other Area
C1	Gold Flash	Gold Flash	E1	Gold Flash	Tin plated
C2	Gold 3u"	Gold Flash	E2	Gold 3u"	Tin plated
C3	Gold 10u"	Gold Flash	E3	Gold 10u"	Tin plated
C4	Gold 15u"	Gold Flash	E4	Gold 15u"	Tin plated
C5	Gold 30u"	Gold Flash	E5	Gold 30u"	Tin plated

DSND	HUANGJM	DATE	2011-12-01	SCALE:	
CHKD				VIEW:	
APVD				UNIT:	mm

NAME: D-SUB P.C.B Female Dual Row Right Angle Type(Stamed PIN)
 Part No: ZDRXXXFXXXXXXX



Dongguan Fushu Electronic Technology Co., Ltd
 Tel: 0755-81765247/41 Fax: 0769-81765203

Customer Part NO: (DWG NO.)

unless otherwise specified tolerance:
 . X ± . 38,
 . XX ± . 25,
 . XXX ± . 15,
 ANG ± 2°

MARK	DESCRIPTION	DATE	REVISED	APPROVED
REVISIONS				