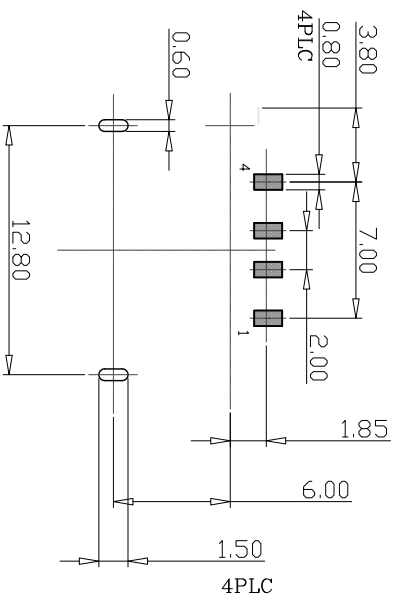
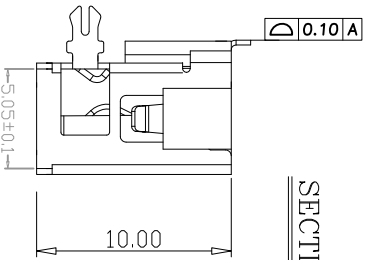


SECTION A-A



RECOMMENDED PCB LAYOUT  
THICKNESS=1.0mm (TOLERANCES ±0.05)

SPECIFICATIONS:  
ELECTRICAL SPECIFICATION

Contact Current Rating: 1.5 Amperes  
Dielectric Withstanding Voltage: AC 500/60ses.r.m.s.  
Insulation Resistance: 1000 Megohm Min. at DC 500V  
Contact Resistance: 30 milliohm Max.  
Operating Temperature: -25°c \_\_\_ +105°c

MATERIALS:

Contacts: Brass or Phosphor bronze  
Contacts Plating: See number description  
Insulator: PBT+G.F UL94V-0  
Shell: Steel or Brass

PART NO: ZUS S24FE1 EQ N1

- 1, USB type
- 2, Performance:
  - B= solder type
  - S=SMT type
- 3, Sort:
  - 0= USB B TYPE
  - 1= USB A TYPE 3.0
  - 2 = USB A TYPE 2.0
  - 3= USB A TYPE 3.0
  - 4=4PIN
  - 9=9PIN
- 4, Contact No.:
- 5, Contact Type:
  - F=Female type,Brass
  - S=Female type,Phosphor bronze
  - M=Male type,Brass
  - P=Male type,Phosphor bronze
- 6, Contact plating : See table1
- 7, Shell material :
  - F: SPCC
  - C: BRASS
- 8, series number : 01
- 9, Shell Plating:
  - N=plating nickel
  - T=Plating Tin
- 10, Color :
  - 1=White
  - 2=Blue
  - 3=Black

Table 1

CODE	Contact Area	Other Area
E1	Gold Flash	Tin plated
E2	Gold 3u"	Tin plated
E3	Gold 10u"	Tin plated
E4	Gold 15u"	Tin plated
E5	Gold 30u"	Tin plated

MARK	DESCRIPTION	DATE	REVISED	APPROVED	unless otherwise specified tolerance: .XX±.25, .XXX±.15, ANG±2°
REVISIONS					
DSN/D: HUANGJM DATE: 2011-12-01 CHKD: VIEW:  UNIT: mm APPD:					
Part No: ZUS Sxx (FS) xxx xxx xx Customer Part No.(DWG NO)					



Dongguan Fishu Electronic Technology Co.,Ltd  
Tel:0755-81765247/41 Fax:0769-81765203