

RoHS

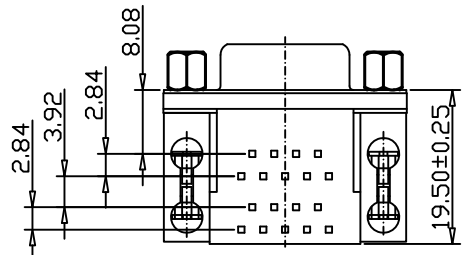
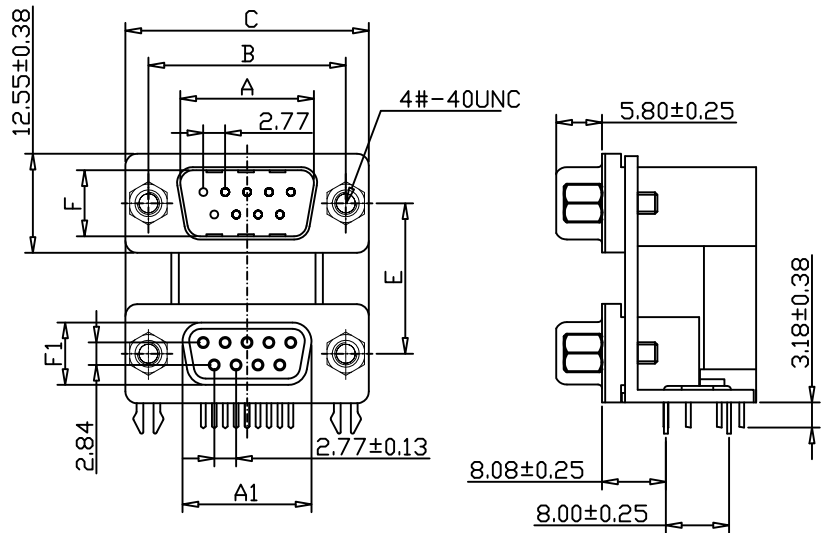
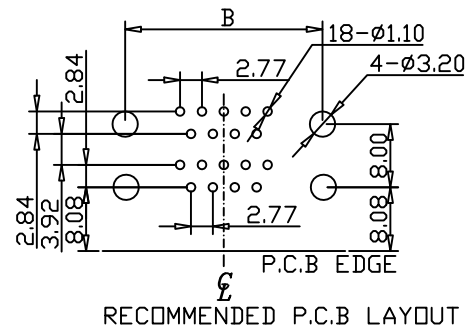


Table 1 (SPACING BETWEEN PORTS)

E	N	M
	19.05	15.88

Table 2

NUMBER OF CONTACTS	A	A1	B	C	F	F1
	±0.25	±0.25	±0.13	±0.38	±0.20	±0.13
9	16.92	16.33	24.99	30.85	8.36	7.93
15	25.25	24.66	33.32	39.14		
25	38.96	38.38	47.04	53.04		
37	55.42	54.84	63.50	69.32		



SPECIFICATIONS

ELECTRICAL CHARACTERISTICS:

Contact Current Rating:3 Amperes.
 Dielectric Withstanding Voltage: AC 1000/60sec.r.m.s.
 Insulation Resistance:1000 Megohms Minimum.at DC 500V.
 Contact Resistance:25 Milliohms Maximum.
 Operating Temperature:-55°C to+105°C.

MECHANICAL CHARACTERISTICS:

Contact Insertion Force:341 g.Maximum.
 Contact Separation Force:21 g.Minimum.

MATERIALS:

Contacts:Brass.
 Insulator: PBT Or High Temperature Plastic
 UL 94V-0 Rated.

Shell: Cold Roller Steel.

FINISHES:

Contact:Gold Flash Or Full Gold.
 Shell: Nickel Plated.

PART NO: Zxxx xxx xx x x x x x

1. TOP CONNECTOR TYPE: 09M:9-POS. MALE 09F: 9-POS. FEMALE 15M: 15-POS.MALE 15F: 15-POS. FEMALE 25M: 15-POS.MALE 25F: 15-POS. FEMALE 37M: 15-POS.MALE 37F: 15-POS. FEMALE	5 ⁺ Accessories: 0:No accessories E:Lock brass hexagon screw,5.8*12.8mm G: Lock iron hexagon screw 4.8*11.8 J:Lock iron hexagon screw 5.8*12.8mm K:Lock brass hexagon screw,4.8*11.8mm
2. BOTTOM CONNECTOR TYPE: 09M:9-POS. MALE 09F: 9-POS. FEMALE 15M: 15-POS.MALE 15F: 15-POS. FEMALE 25M: 15-POS.MALE 25F: 15-POS. FEMALE 37M: 15-POS.MALE 37F: 15-POS. FEMALE	6 ⁺ SPACING BETWEEN PORTS: N=19.05mm M=15.88 ⁺ Color :
3. Contact plating: See table 3	7 , Color : 3=Black
4. Assembly: B=No accessories	8 ⁺ Remark:

Table 3

Gold Plated			Selective Gold Type		
CODE	Contact Area	Other Area	CODE	Contact Area	Other Area
C1	Gold Flash	Gold Flash	E1	Gold Flash	Tin plated
C2	Gold 3u"	Gold Flash	E2	Gold 3u"	Tin plated
C3	Gold 10u"	Gold Flash	E3	Gold 10u"	Tin plated
C4	Gold 15u"	Gold Flash	E4	Gold 15u"	Tin plated
C5	Gold 30u"	Gold Flash	E5	Gold 30u"	Tin plated

DSND	HUANGJM	DATE	2011-12-01	SCALE:	NAME:
CHKD				VIEW:	D-SUB Dual Row DUAL PORT Type(Stained PIN)
APVD				UNIT: mm	Part No: ZXXXXXXXXXX0
Dongguan Fushu Electronic Technology Co.,Ltd Tel:0755-81765247/41 Fax:0769-81765203				Customer Part NO:(DWG NO.)	

unless otherwise specified tolerance:
 . X ± .38, ANG ± 2°
 . XX ± .25,
 . XXX ± .15,

MARK	DESCRIPTION	DATE	REVISED	APPROVED
REVISIONS				